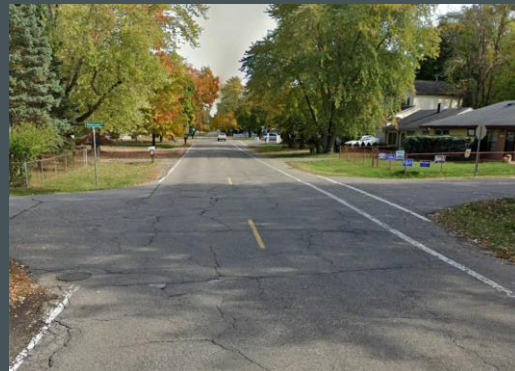
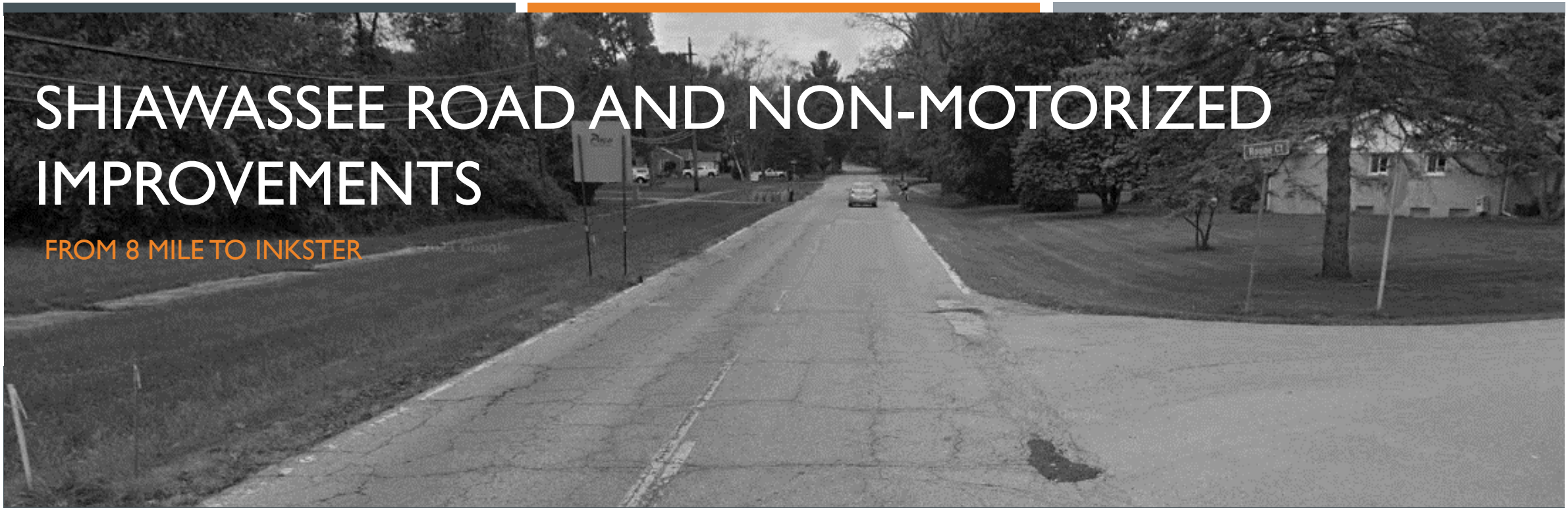


SHIAWASSEE ROAD AND NON-MOTORIZED IMPROVEMENTS

FROM 8 MILE TO INKSTER



OHM Advancing Communities®
ARCHITECTS. ENGINEERS. PLANNERS.

Southfield
the center of it all™

Presentation Agenda

- **Project Overview and Existing Conditions**
- **Proposed Improvements**
- **What to Expect During Construction**
- **Construction Contact Information**
- **Questions**

SHIAWASSEE
ROAD AND
NON-
MOTORIZED
IMPROVEMENTS

PROJECT OVERVIEW:

LOCATION

-Shiawassee from Inkster to 8 Mile

SCOPE

- Spot Concrete
- Asphalt Rehabilitation
- Asphalt Reconstruction
- HMA Pathway Construction

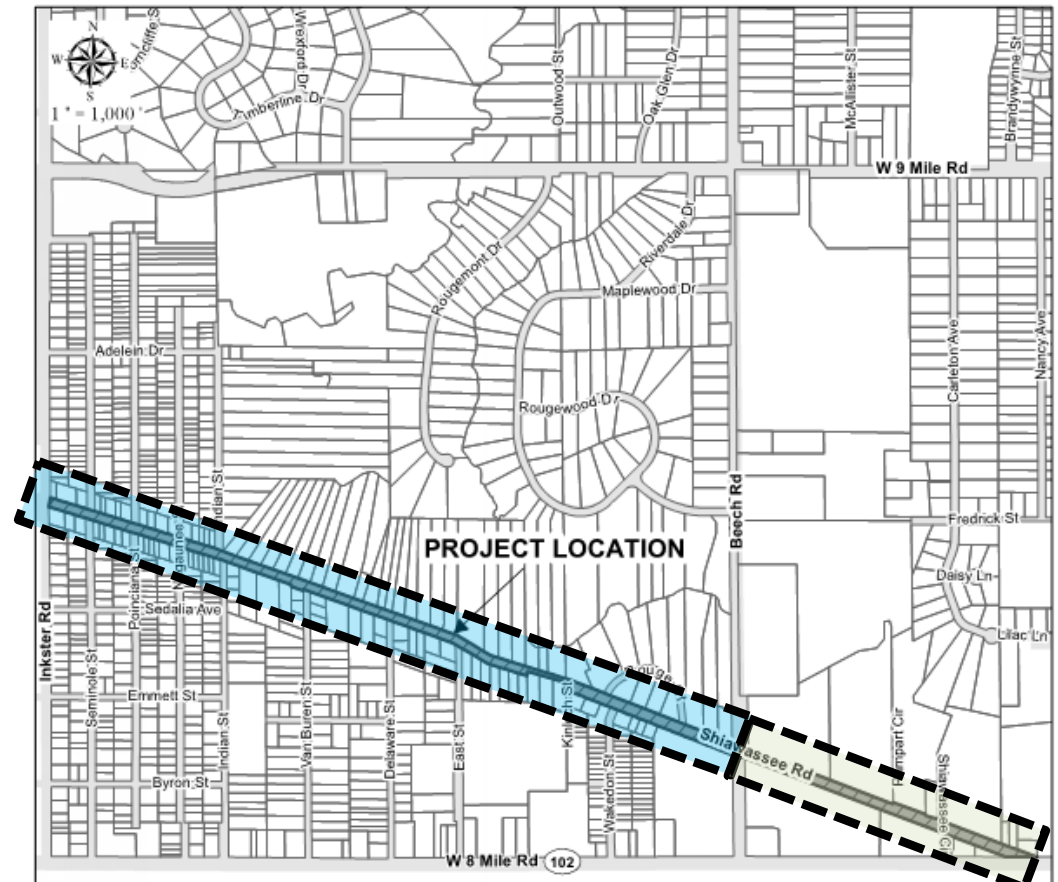
SCHEDULE

Start	5/2022
Substantial	10/2022
Final	05/2023

PROJECT COST

\$2.8 M

Project Components



Pulverization and Asphalt Overlay and Asphalt Shared-Use Pathway



Concrete Patching



SHIAWASSEE ROAD AND NON-MOTORIZED IMPROVEMENTS

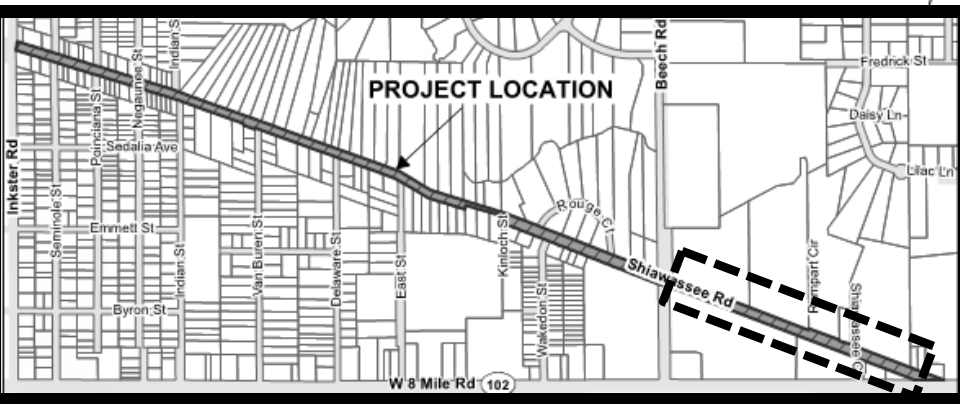
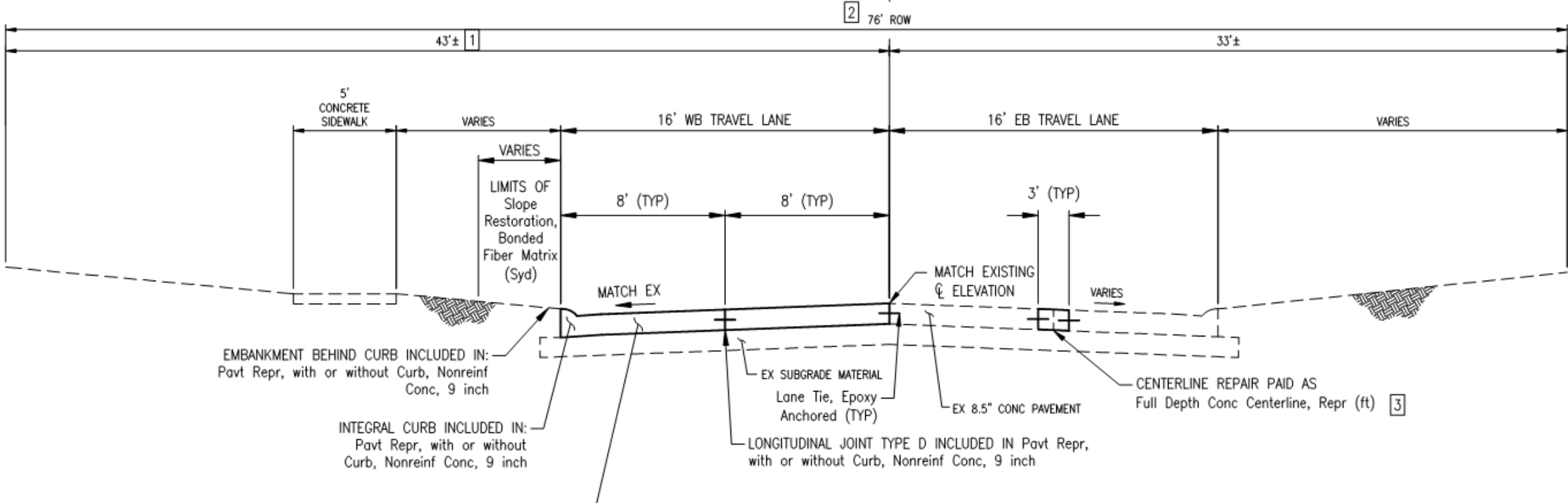
CURRENT CONDITIONS

Shiawassee – 8 Mile to Beech

- Curbed Concrete Pavement
 - Conditions Primarily Fair
- Sidewalk Gap on the North Side of Shiawassee Just West of 8 Mile

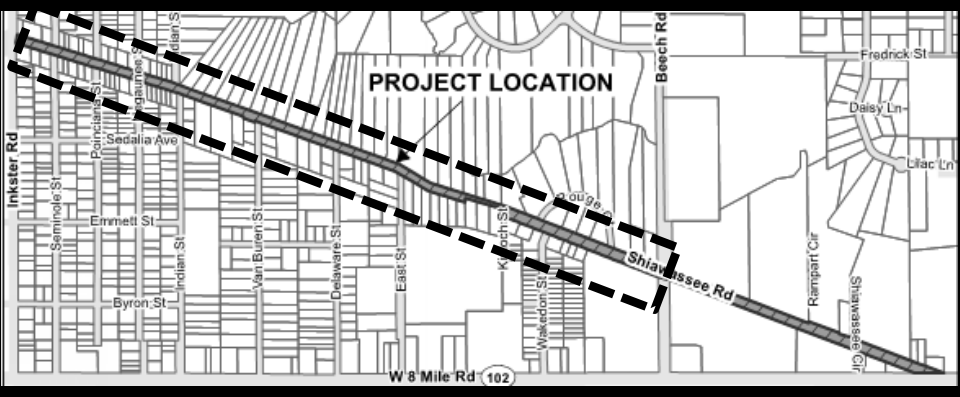
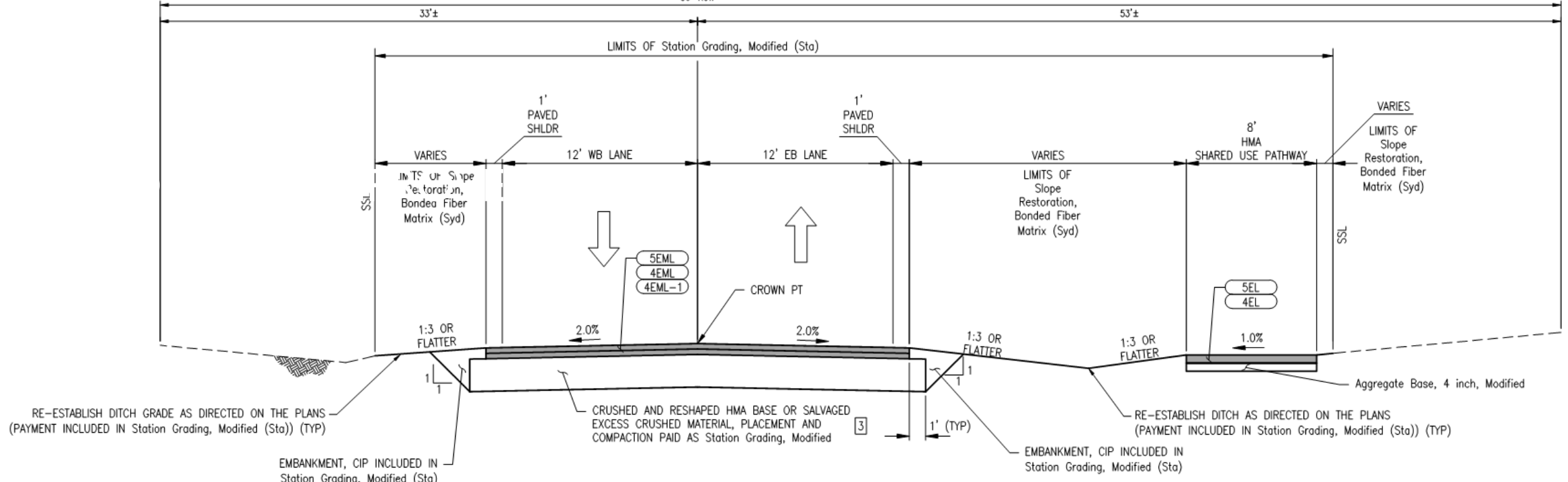
Shiawassee – Beech to Inkster

- Asphalt Pavement
 - Conditions Poor
- Open Shoulder With and Without Ditches
- 6-Foot Asphalt Pathway that is both on-street and off-street



- Spot Repair of Existing Concrete
 - Full or partial slab repairs depending on conditions
 - Performed in stages to minimize impacts to residents
 - Travel will be allowed in the eastbound direction

PROPOSED IMPROVEMENTS – 8 MILE TO BEECH



- Pulverization (Recycling) and Overlay of Existing Asphalt Pavement
- Construction 8-foot Off-Street Asphalt Pathway
- Re-establishment of Existing Ditch
 - This work will include some new storm sewer and culverts on the south side of the road, as well as several tree removals

PROPOSED IMPROVEMENTS – BEECH TO INKSTER

WHAT TO EXPECT DURING CONSTRUCTION



Traffic Control

Shiawassee – 8 Mile to Beech: Road will be closed in the westbound direction starting at 8 Mile. Eastbound traffic will be allowed for the duration of the project.

Shiawassee – Beech to Inkster: There will be a full closure of Shiawassee just east of Inkster, where no entry or exit will be permitted. All local traffic must access Shiawassee from Beech, but through traffic will not be permitted.



Road Work and Access

Local traffic will be maintained at all times.

From time to time, there may be traffic delays on Shiawassee depending on contractor operations. Especially during storm sewer and ditching work, as well as during asphalt pathway construction. If possible, travel on Shiawassee should be avoided until construction has concluded.



Driveway Closures

Driveway replacement may require a 2 week closure, if it is concrete. Temporary parking will be permitted in the street or in adjacent driveways if arranged.

OTHER QUESTIONS



Trees

Tree removal is planned for the project in order to make room for the asphalt pathway or roadway. Some of this removal work will begin this week.



Mail Service

Mail service will be maintained. The work may require temporary relocation of some mailboxes during construction. Separate notice will be provided to residents when relocations are necessary.



Trash

Provisions will be made to maintain trash pickup throughout construction.



School Busses

School bus routes may be modified during construction. Any rerouting and bus stop changes will be coordinated with the school district.



Landscape Restoration

All lawn areas and irrigation will be restored after construction has been completed. We request that any landscaping and plantings are removed from the public right of way if possible.



Safety

New asphalt pathway will be located off the road, providing additional safety to users. All walk along Shiawassee will be ADA compliant.

CONTACT INFORMATION



PROJECT ENGINEER
(Main Contact for all questions
and project inquiries)

OHM Advisors, Inc. (OHM)
34000 Plymouth Road
Livonia MI 48150
• Cara Parks, Construction
Engineer – 734.466.4420



CONTRACTOR

Springline Excavating LLC.
32945 Folsom Rd.
Farmington Hills, MI 48336



CITY OF SOUTHFIELD

Leigh Schultz, City Engineer –
248-796-4810



QUESTIONS?